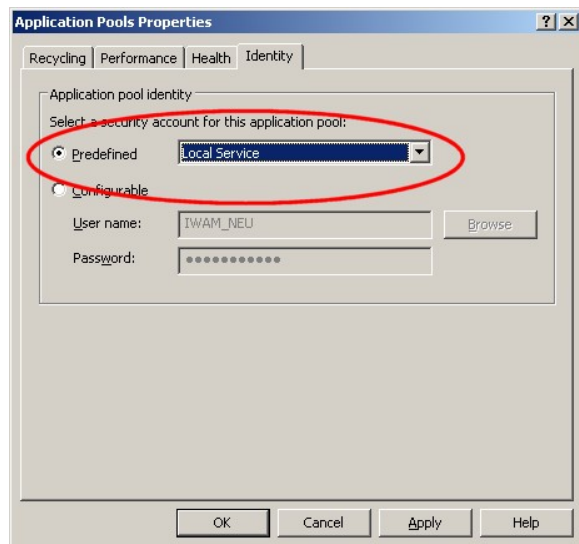
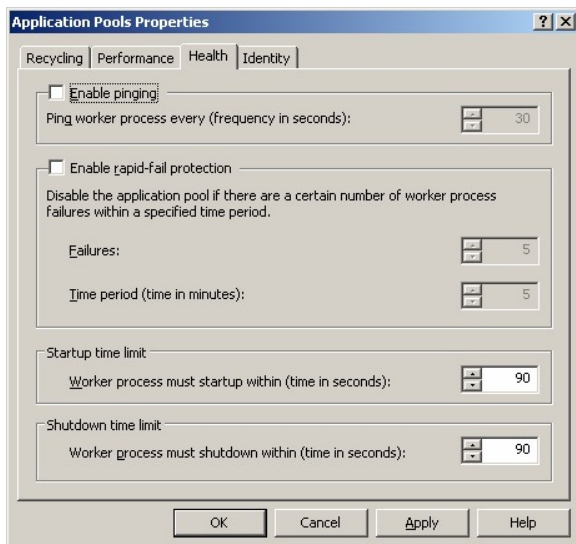
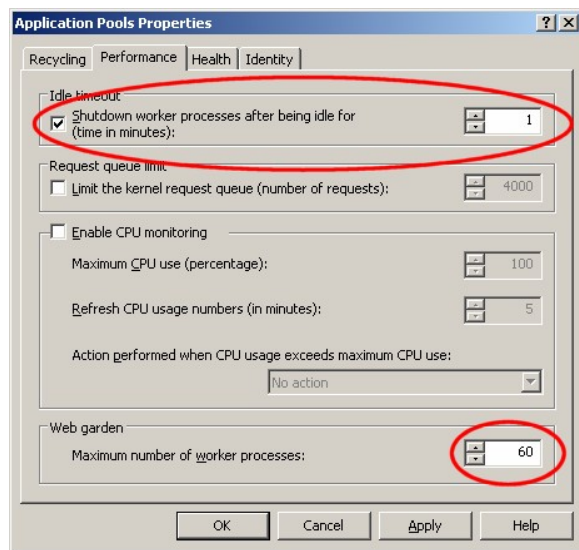
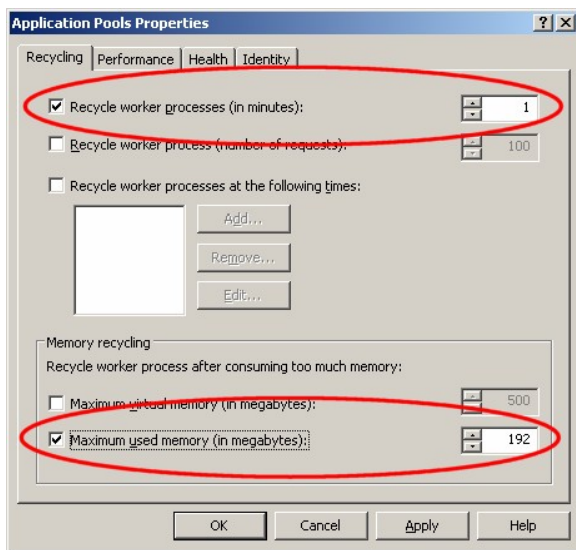


Configure Application Pool to use Aloaha COM Objects from ASP, PHP etc.

Microsoft IIS Server caches Objects even if the script itself unloads them. If then subsequently the Objects gets reloaded IIS will load the cached version. This can lead to some unpredictable results such as no access to CAPI based objects. Please find below a working configuration. This configuration will allow 60 worker processes which will be recycled after 60 seconds. Like this it is guaranteed that the first 60 server requests will not get a cached object.

It is furthermore pretty important that the Identity of the worker process is the LocalSystem Account



Caching of ASP Pages should be deactivated as far as possible to avoid having a cached CAPI object blocking access to the required private key.

The parent path should be enabled in case your PFX file is located somewhere outside the IIS directory structure.

