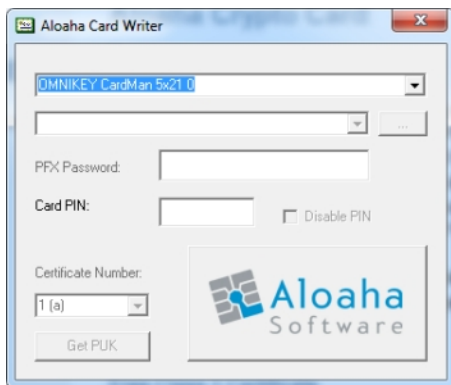


Aloaha Crypto Card

Details for the Aloaha Crypt Card can be found on the Aloaha Homepage at <http://www.aloaha.com/smartcard-software-en/aloaha-crypto-card.php>

Personalisation

The Aloaha Crypto Card can be personalised with up to 3 certificates. The personalisation tool Aloaha Card Writer is included in the Aloaha Card Connector¹ and Aloaha Credential Provider/Smart Login². To start the tool please right click on the yellow system tray icon and choose "PFX Writer". The following tool will then pop up:



Writing of PFX Files to the Card

To write PFX Files to the card please choose first your card reader. Then choose your PFX File. In case the PFX file is password protected you need to specify that password. You need NOT to specify the PIN³ to write a certificate. With Certificate Number you specify the crypto container used on the smart card.

Following Container are possible:

- 0 (s) for qualified signature certificate
- 1 (a) for authentication - or advanced signature certificate
- 2 (e) for the encryption certificate.

In case you are planning to write only one certificate to the card please use container 1 (a). If you are planning to use two signature certificates please use 0 (s) and 1 (a). Leaving the encryption container 2 (e) empty will instruct Aloaha to use the authentication certificate 1 (a) for encryption

¹ <http://www.aloaha.com/download/cardconnector.zip>

² <http://www.aloaha.com/download/credentialprovider.zip>

³ Default PIN of Aloaha Card is 1234

Writing of CER Files to the Card

.cer file do not contain a private key. Aloaha will only allow writing the .cer file to the card if the private key on the card corresponds to the public key of the .cer file

Enroll Certificate from Active Director CA

To enrol a Certificate directly from a Windows CA just choose the certificate template instead of a file. Please note that this method is the most secure way – but also slow since the private key will be generated by the card itself.

Test Certificates

This PDF Document contains 3 Test Certificates in PFX format as attachment:

JohnDoe-cert_0.pfx for container 0 (s)

JohnDoe-cert_1.pfx for container 1 (a)

JohnDoe-cert_2.pfx for container 2 (e)

You can choose to write

- a) only JohnDoe-cert_1.pfx info container 1 (a)
or
- b) JohnDoe-cert_0.pfx to container 0 (s) and JohnDoe-cert_1.pfx to container 1 (a)
or
- c) all 3 certificates. It is suggested to use option b)

In case you do not manage to open the PDF Attachment please note that you can download the certificates also from <http://www.aloaha.com/download/testcertificates.zip>